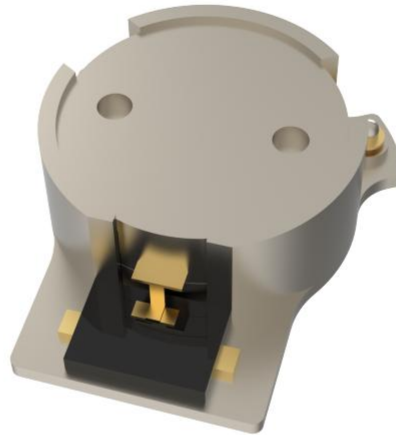




OHYG105H-1930-2000



Features

- Surface-mount package for automated PCB assembly
- High isolation of 23 dB
- Low insertion loss of 0.25 dB
- Stable performance across -40 to +120 °C
- Integrated IMD3 suppression

Description

The product named OHYG105H-1930-2000 is high-performance stripline surface-mounted isolator designed for cellular infrastructure, offering high return loss and isolation in the 1930-2000 MHz band.



Technical indicators

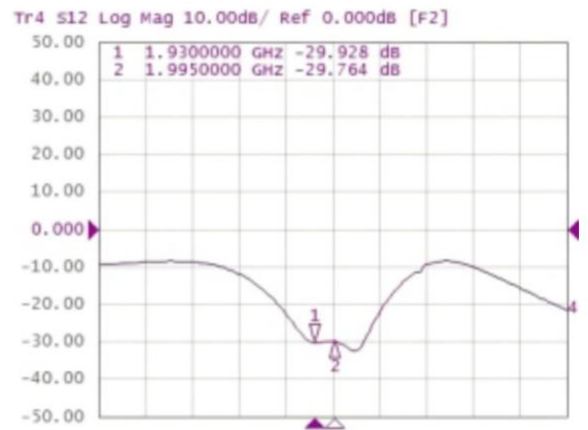
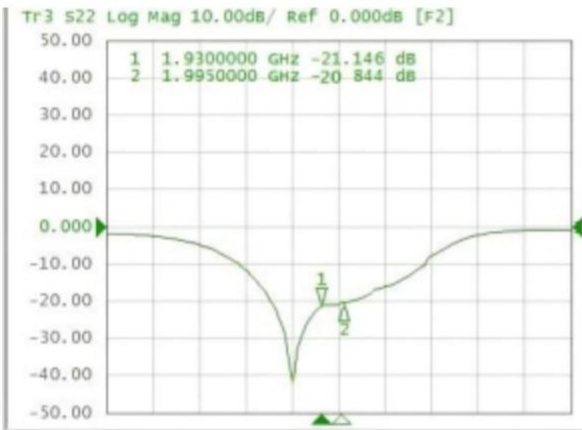
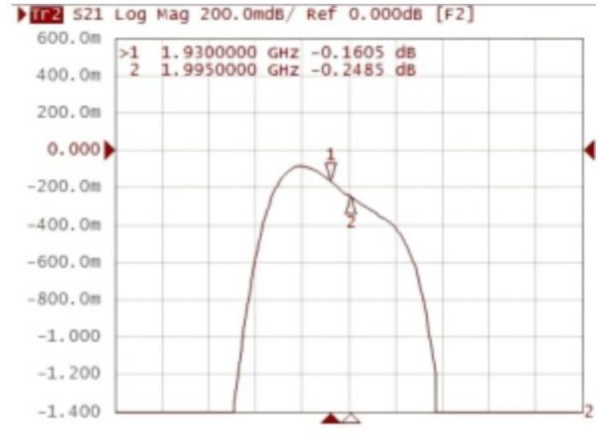
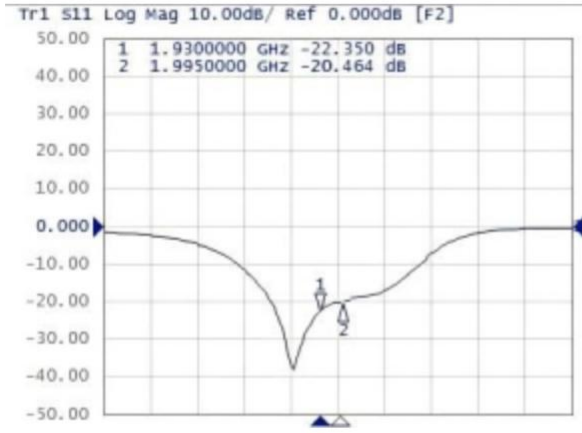
Size Spec	Part Nbr	Freq. (MHz)	Return Loss (dB)	Isolation (dB)	Insertion Loss (dB)	IMD3 (dBc)	Forward Power (W)	Reverse Power (W)	Operating Temp (°C)
18mm	OHYG105H	1930-2000	23	23	0.25	-69 2*40W	160	80	-40 ~ 120

Mechanical Outline





Performance Data





Performance Data (cont.)

