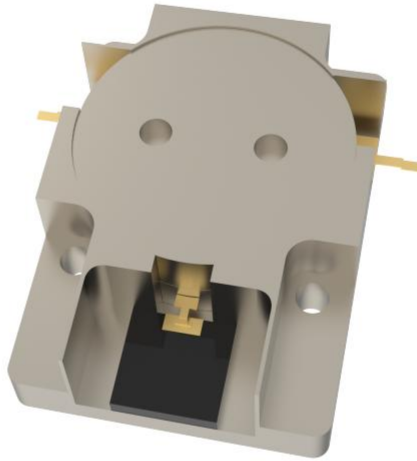




# OHYG511C-859-960



## Features

- High isolation
- Low insertion loss
- High power handling
- Wide operating temperature range
- Excellent IMD3 performance

## Description

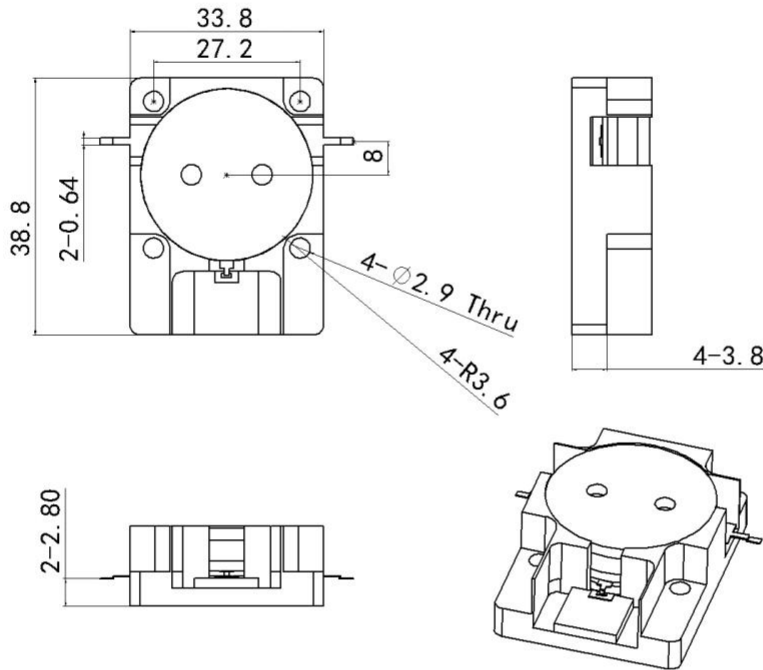
The product named OHYG511C-859-960 is high-performance embedded isolator designed for stripline applications, offering high isolation and low insertion loss across its operating range.



### Technical indicators

Size Spec	Part Nbr	Freq. (MHz)	Return Loss (dB)	Isolation (dB)	Insertion Loss (dB)	IMD3 (dBc)	Forward Power (W)	Reverse Power (W)	Operating Temp (°C)
1.25inch	OHYG511C	859-960	20	20	0.25	-65 2*50W	250	150	-40 ~ 120

### Mechanical Outline





## Performance Data

