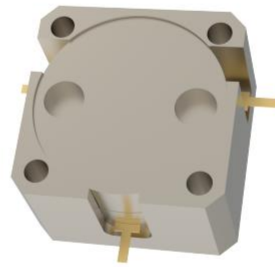




OHYH524C-3300-3600



Features

- Embedded circulator design
- High isolation of 20 dB
- Low insertion loss of 0.30 dB
- High power handling capability up to 160W
- Operating temperature range from -40 to +85 Celsius

Description

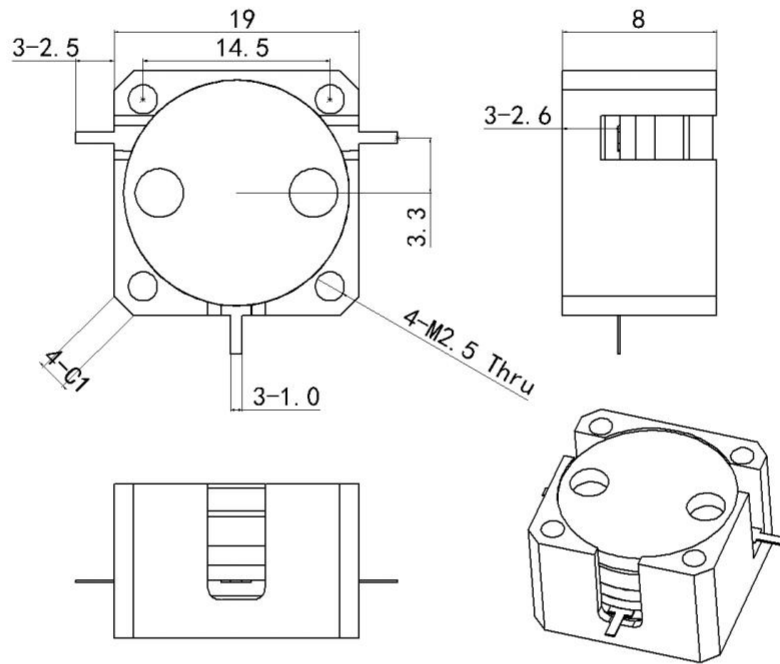
The product named OHYH524C-3300-3600 is high-performance stripline embedded circulator designed for RF signal isolation and routing in telecommunication systems.



Technical indicators

Size Spec	Part Nbr	Freq. (MHz)	Return Loss (dB)	Isolation (dB)	Insertion Loss (dB)	IMD3 (dBc)	Power (W)	Operating Temp (°C)
0.75inch	OHYH524C	3300-3600	20	20	0.30	-70 @ 2x30W	160	-40 ~ 85

Mechanical Outline





Performance Data

