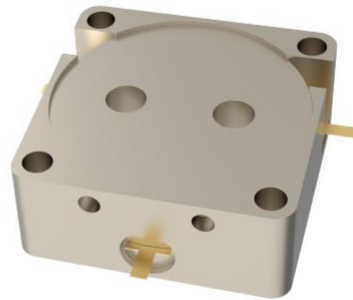




# OHYH535A-1805-1880



## Features

- Embedded stripline design
- High isolation performance
- Low insertion loss
- High power handling capability
- Wide operating temperature range

## Description

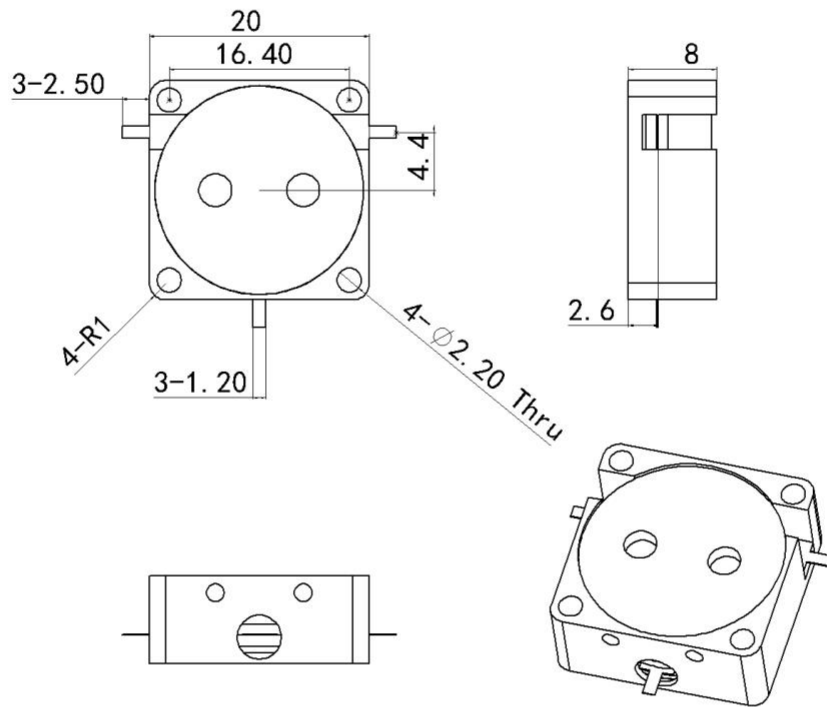
The product named OHYH535A-1805-1880 is high-performance stripline embedded circulator designed for telecommunications and microwave applications, offering stable isolation and low insertion loss across its operating range.



### Technical Indicators

Size Spec	Part Nbr	Freq. (MHz)	Return Loss (dB)	Isolation (dB)	Insertion Loss (dB)	IMD3 (dBc)	Power (W)	Operating Temp (°C)
20*20mm	OHYH535A	1805-1880	22	22	0.25	-65 / 2*30W	160	-40 to +85

### Mechanical Outline





## Performance Data

