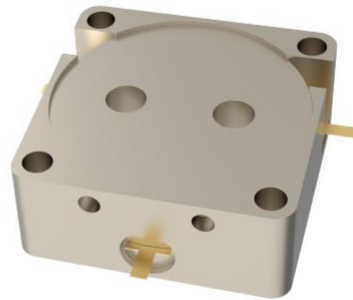




OHYH535A-2110-2170



Features

- Embedded stripline design
- High isolation performance
- Low insertion loss
- High power handling capability
- Wide operating temperature range

Description

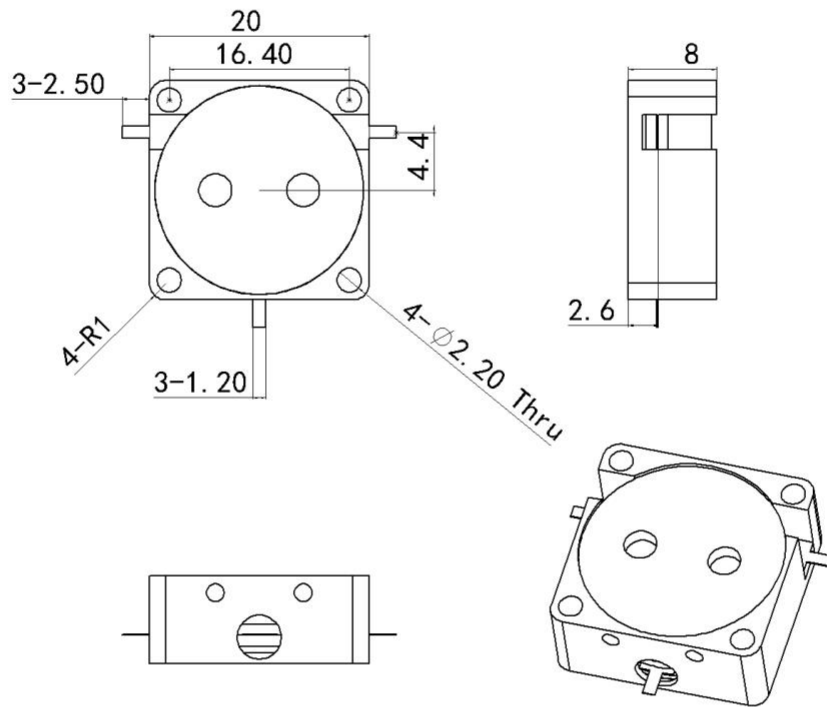
The product named OHYH535A-2110-2170 is high-performance stripline embedded circulator designed for telecommunications and microwave applications, offering stable isolation and low insertion loss across its operating range.



Technical Indicators

Size Spec	Part Nbr	Freq. (MHz)	Return Loss (dB)	Isolation (dB)	Insertion Loss (dB)	IMD3 (dBc)	Power (W)	Operating Temp (°C)
20*20mm	OHYH535A	2110-2170	22	22	0.25	-65 / 2*30W	160	-40 to +85

Mechanical Outline





Performance Data

